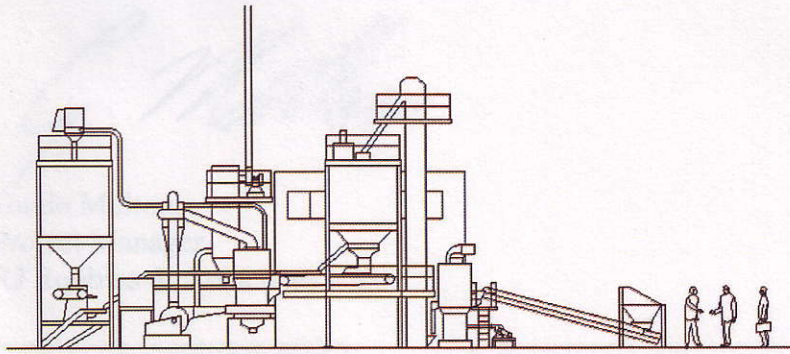


Jedsway Pty Ltd (ABN 85 010 782 019)
Trading as



R.J. ROBBINS & ASSOCIATES

Tuesday, 26 June 2007

To Whom it may concern:

RJ ROBBINS: Design Engineers and Project Managers
Guido Moltoni Project Manager:

RE: Mindarie Zircon Mine Construction Project

During the course of the Mindarie Mineral Sand Mining construction project we have utilised the services of Bowhill Engineering as well as the MFC or Murraylands Fabrication Consortium. Their joint involvement saw them complete fabrication and supply of structural steelwork for the PCP (primary concentrating plant), Drying floor, Thickener and various other areas.

During our involvement with them, we have enjoyed a very positive experience:

The true benefit that we noticed with Bowhill Engineering and the MFC was that there was no apparent variation from the high standard of supply of manufactured structural steel when Bowhill chose to utilise their consortium members to increase their supply capacity.

The timing and amount of fabrication required was substantial, the whole group worked well together to deliver a sizable amount of the work at Mindarie, within good time lines, which was a big advantage to RJ Robbins.

It would seem that the consortium has a well documented and disciplined system that can consistently maintain, the high standards that they have set as a group and of which we demand on such projects.

Also of great value was the fact that there was one contact point: Regardless of which MFC member was actually completing each portion of work, the trusting relationship that was built with Bowhill Engineering, was continued seamlessly. Because we continued to contract to Bowhill Engineering our well established point of contact was unchanged and our administration was just as simple.

P.O. Box 371
Mt. Gravatt Qld 4122
Australia

28 staple Street
Seventeen Mile Rocks Qld 4073
Australia

Ph: (+617) 3376 9777
Fax: (+617) 3376 9699
Email: rrobbins@gil.com.au
Web: rjrobbins.com.au

We would not hesitate to continue using their services and commend all involved for their efforts on this project.

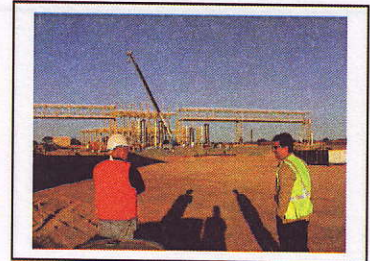


Guido Moltoni
Project Manager
RJ Robbins & Associates

P.O. Box 371
122
Australia

25 Maple Street
Seventeen Mile Rocks Qld 4073
Australia

Ph: (+617) 3376 9777
Fax: (+617) 3376 9699
Email: rrobbs@gil.com.au
Web: rjrobbs.com.au



To Whom it may concern:

RJ ROBBS: Design Engineers and Project Managers
Guido Moltoni Project Manager

RJ: Mindarie Zircon Mine Construction Project

During the course of the Mindarie Mineral Sand Mining construction project we have utilized the services of Bowhill Engineering as well as the MFC or Maryland Fabrication Consortium. Their joint involvement saw them complete fabrication and supply of structural steelwork for the PCP (primary concentrating plant), Drying flow, Thickener and various other areas.

During our involvement with them, we have enjoyed a very positive experience.

The true benefit that we noticed with Bowhill Engineering and the MFC was that there was no apparent variation from the high standard of supply of manufactured structural steel when they all chose to utilize their consortium members to increase their supply capacity.

The timing and amount of fabrication required was substantial, the whole group worked well together to deliver a sizable amount of the work at Mindarie, within good time frames, which was a big advantage to RJ Robbins.

It would seem that the consortium has a well documented and disciplined system that can consistently maintain the high standards that they have set as a group and of which we demand on such projects.

Also of great value was the fact that there was one contact point. Regardless of which MFC member was actually completing each portion of work, the trusting relationship that was built with Bowhill Engineering, was continued seamlessly. Because we continued to contract to Bowhill Engineering our well established point of contact was unchanged and our administration was just as simple.