

## benefits

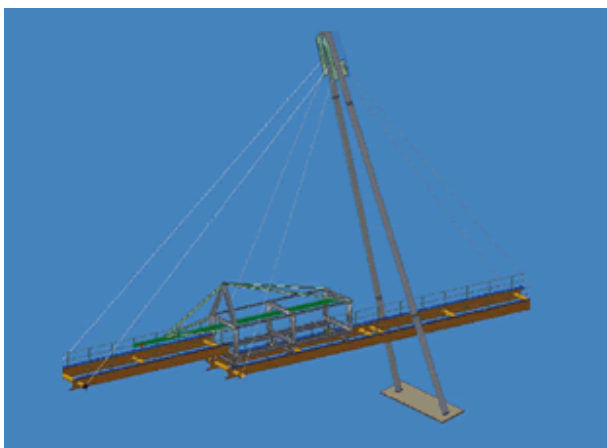
“We do things for our customer's convenience, not ours”

- Jeremy Hawkes *Managing Director*

Bowhill Engineering have a proven track record, the benefits to you are enforced by the rock solid reputation that they have built over some 30+ years in business.

### methodology development

With a wealth of experience, innovative staff, and state of the art software, we are well equipped to help our customers with well thought out, safe, efficient and synchronized project methodologies. This service fits well with ECI type contracts and tricky or complex tasks that need “proving” before manufacture. 3D simulation of methodologies, (As seen below) enable us to electronically trial simulate a proposed methodology of a complex nature, successfully identifying the methodology's merit from a physical, safety and practical, standpoint and allow a good visual understanding hence informed and precise input from all stakeholders.



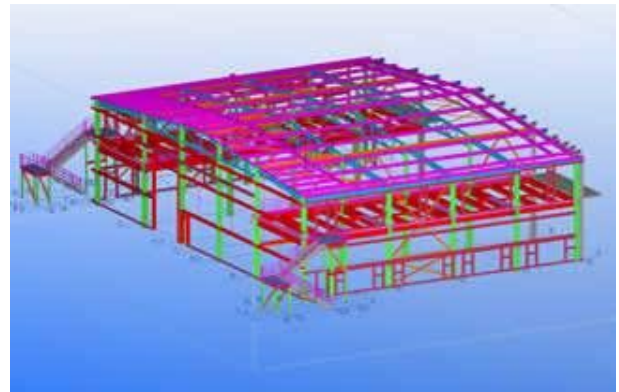
*This methodology simulation was done to prove that the cable-stayed bridge could be constructed from only one of the river banks using a mono-crane launching trolley system.*

### value for money

With committed staff and a highly efficient manufacturing process, we are able to produce fabrications of exceptional quality at competitive market rates. We do this by utilising the supply chain's specialised skills and facilities through fostering great supplier networks and lean linkages. This approach is an extremely effective way of achieving an impressive result for all stake holders on a project. By minimising capital outlay we reduce expensive overheads, increase our overall capacity and benefit from a low cost structure in relation to the impressive amount of work that we can produce.

### speed and accuracy

Our close linkages with drafting specialists using X Steel have allowed us to continue lean principles through drafting to processing. This results in NC format files (which are developed straight from the project model) being sent via email straight to the steel merchant for CNC processing. Accuracy and speed are huge advantages resulting from this process.



## surface treatment

We have built a new surface treatment facility that is able to process large components, in an efficient, effective and environmentally sensitive way. The ability to complete this critically important process on our manufacturing site is hugely beneficial to you as our client because it results in savings, quality control and effective loading on transport. In simple terms we can ensure that you get what you want, when you want it! Without this in-house service other fabricators are at the mercy of the industry, and they simply do not have the control that this critical process demands.

“This process protects the clients valuable investment, it must be right”

- Mark Graham *Production Manager*



## reputation

We have the runs on the board, by nominating us on your project team, your clients will be favourable to your overall proposal.

Bowhill Engineering have been active in the building and construction industry since the late 1990's. Our reputation is something that we are passionate about and something that we take great care of. As you well know, in this industry any mistakes are well known and reputations are easily damaged. Throughout this entire time Bowhill Engineering have not one tarnish on their reputation, quite a testament, and rarely seen.

## services and facilities

- Workshop total floor area (3,000m<sup>2</sup>)
- Large yard area
- EPA approved Blast and painting facility (floor area 650m<sup>2</sup>)
- Overhead gantry cranes in main workshop totalling a 35t capacity
- Mobile crane
- Forklifts
- Brake Press
- Welding and heavy automated welding
- Non ferrous welding and surface treatment (passivating facility)
- Section cutting and processing equipment
- Plasma cutting
- Cropping (punch, shear and notch plate).
- Drilling
- Straightening/cambering press
- Horizontal rotating machine
- Pipe bending
- Plate rolls
- Machine shop (lathes and mills)
- Surveying tools
- Concrete drilling equipment
- Transport
- Design (3D inventor software)

## attitude of excellence

68 Weber Road, Bowhill SA 5238  
BLN: 166373 ABN: 33 911 388 370  
[www.boweng.com.au](http://www.boweng.com.au)

Telephone: (08) 8570 4208  
Facsimile: (08) 8570 4350  
Email: [admin@boweng.com.au](mailto:admin@boweng.com.au)

